



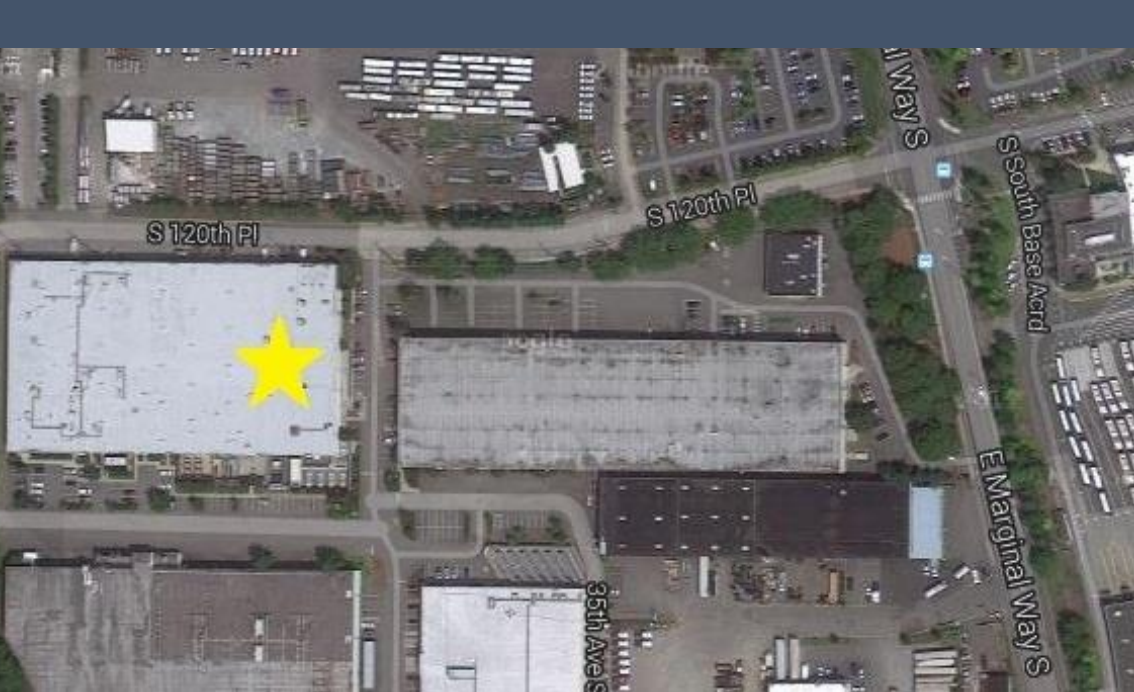
# 3311 SOUTH 120<sup>th</sup> PLACE @ SEATTLE, WA

- ❖ PRIVATE TURN-KEY DATACENTER
- ❖ WORLD CLASS COLOCATION
- ❖ 100% UPTIME SLA
- ❖ CARRIER NEUTRAL
- ❖ AWS DIRECT CONNECT
- ❖ ENERGY EFFICIENT
- ❖ MISSION CRITICAL BANDWIDTH
- ❖ SSAE-18 SOC-2 AUDITED
- ❖ ISO 27001 CERTIFIED



FOR MORE INFORMATION PLEASE CONTACT:

**Tim Sexton**  
Colocation Sales Expert  
+1 (571) 282-6321  
[tsexton@cherryroad.com](mailto:tsexton@cherryroad.com)



**3311**  
**SOUTH 120<sup>th</sup>**  
**PLACE @**  
**SEATTLE, WA**

**FEATURES & SPECIFICATIONS**

- :: CONVENIENTLY LOCATED: 4.2 MILES TO SEA-TAC, 9.2 MILES TO DOWNTOWN
- :: SSAE-18 SOC-2 AUDITED
- :: ISO 27001 CERTIFIED ISMS
- :: DUAL AUTHENTICATION SECURED ACCESS
- :: 24x7x365 MANNED FACILITY
- :: CLOSED CIRCUIT SURVEILLANCE THROUGHOUT
- :: FULLY AUTONOMOUS, RIGHT BY THE LOADING DOCK
- :: N+1 UPS (UNINTERRUPTED POWER) & CRAC (AC) SYSTEM REDUNDANCY
- :: 3 x 500KVA N+1 REDUNDANT UPS SYSTEMS
- :: 1.5MW GENERATOR PROTECTED POWER WITH 2000 GALLONS OF FUEL
- :: DEDICATED UTILITY POWER FEED & TRANSFORMER
- :: 300 TONS OF POWER EFFICIENT COOLING, EXPANDABLE TO OVER 500 TONS
- :: ALL MAJOR TELCO PoPs ON SITE IN THE TELCO CAGE (CARRIER NEUTRAL)
- :: MULTIPLE REDUNDANT FIBER ENTRY POINTS

- ❖ PRIVATE TURN-KEY DATA CENTER
- ❖ WORLD CLASS COLOCATION
- ❖ SSAE-18 SOC-2 AUDITED
- ❖ ISO 27001 CERTIFIED

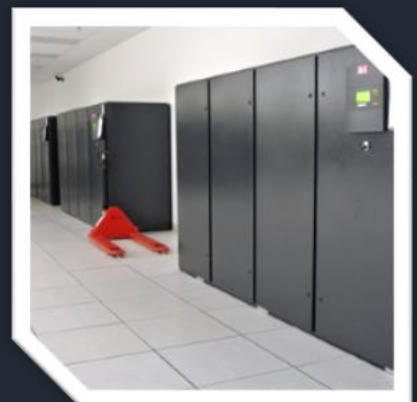
**UNIQUE PRIVATE DATA CENTER**

- :: Excellent connectivity, with multiple telco major long-haul PoPs on-site (the primary telco PoP for the entire Sabey campus); some of the carriers on site include: HopOne, Level 3, TWT, CenturyLink, AT&T, Zayo, XO, Cogent, Comcast, WindStream, Integra, SpectrumNet, and Sabey.
- :: Dedicated utility power feed, fire suppression system, N+1 redundant UPS & AC systems.
- :: 24x7x365 professionally staffed facility with a full range of managed and public/private/hybrid cloud IaaS services available.
- :: Space is flexible: can be configured to specification and/or built out as private cages; available on a per-rack and by-cage basis.



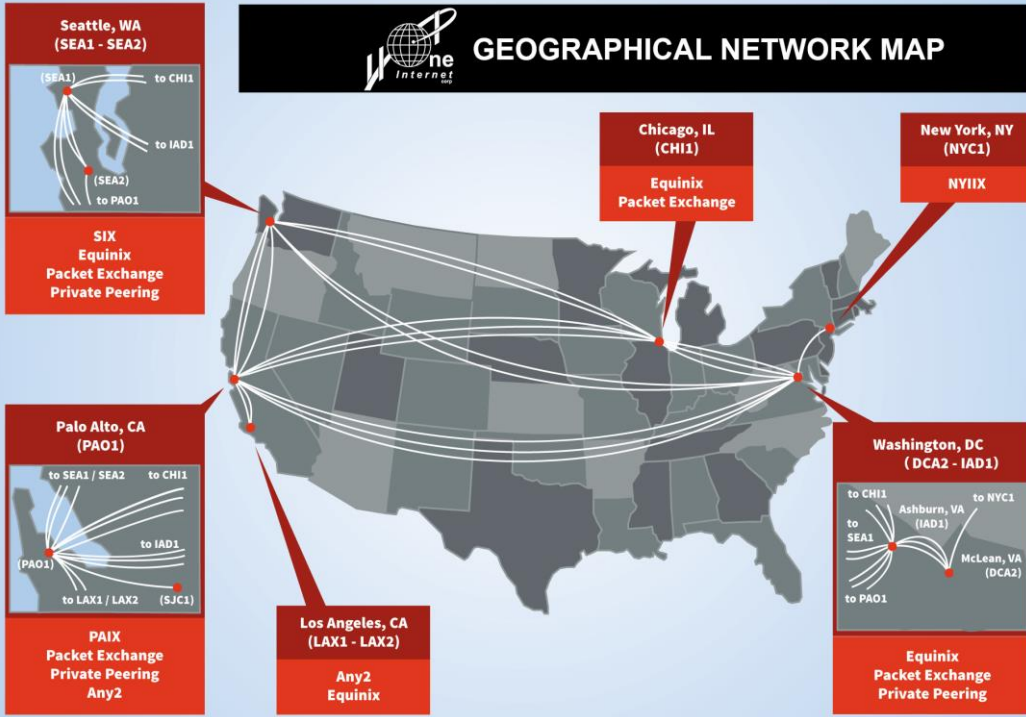
**OPTIONS**

- :: IP transit service with 100% uptime, zero packet loss, low latency SLA
- :: Content acceleration on our global Content Delivery Network (CDN)
- :: 24x7x365 support & monitoring by managed services experts on-site; instant response by on-site technicians available any time of the day or night
- :: Advanced public, private or hybrid cloud hosting on IaaS (Infrastructure-as-a-Service) basis
- :: Custom hardware provisioning & support





# NATIONAL REACH COAST TO COAST IP BACKBONE



3311  
SOUTH 120<sup>th</sup>  
PLACE @  
SEATTLE, WA

- ❖ PRIVATE TURN-KEY DATA CENTER
- ❖ WORLD CLASS COLOCATION
- ❖ SSAE-18 SOC-2 AUDITED
- ❖ ISO 27001 CERTIFIED

## NYC3

375 PEARL STREET, MANHATTAN, NY

### Features:

- :: SSAE-16 audited & highly compliant
- :: Highly secure facility, within NYPD HQ perimeter
- :: NYC's only purpose-built high-rise datacenter
- :: N+1 (or more) fully redundant throughout
- :: Four diverse fiber entry points
- :: Carrier neutral, with numerous carriers on-site



FOR MORE INFORMATION PLEASE CONTACT:

**Tim Sexton**  
 Colocation Sales Expert  
 +1 (571) 282-6321  
[tsexton@cherryroad.com](mailto:tsexton@cherryroad.com)

## DCA2

8201 GREENSBORO DRIVE, TYSONS CORNER, VA

### Features:

- :: SSAE-18 SOC-2 audited
- :: ISO 27001 certified
- :: Excellent connectivity and carrier redundancy
- :: Multiple redundant utility power feeds, generators and UPS systems
- :: 24x7x365 staffed & highly secure
- :: Fully autonomous private mini-datacenter and partly autonomous private suite available



3311  
SOUTH 120<sup>th</sup>  
PLACE @  
SEATTLE, WA

## ABOUT HOPONE INTERNET CORPORATION

:: HopOne Internet Corporation is a leading provider of full range Colocation services, in the US for more than 20 years. HopOne is a CherryRoad Technologies Inc. brand. CherryRoad, is a veteran in IT implementation and known for its reliability in cloud, hybrid, and customized IAAS solutions for more than 35 years. CherryRoad and HopOne are trusted by hundreds of clients who focus on their business goals, while we protect and care for their digital assets. [Learn more about CherryRoad](#)

:: HopOne is an enterprise-grade global cloud services company, operating a low-latency coast-to-coast IP backbone and multiple data centers across the US. As a cloud-based Infrastructure-as-a-Service (IaaS) provider, we provide a comprehensive range of services using our east and west coast data centers connected by our low latency coast-to-coast IP backbone. In addition to the traditional data center services such as colocation and IP transit, we offer a wide array of managed services, private, public and hybrid deployments on our advanced cloud platform and content delivery through our global content delivery network.

:: We provide services to businesses with mission-critical needs including government agencies, financial institutions, carriers and content providers. Our services use a highly customizable service array coupled with dedicated, 24x7x365 on-site and instantly reachable, highly skilled professional network and systems engineers.

:: All HopOne services are SSAE-18 SOC-2 audited and ISO 27001 certified and we have the impeccable performance and reliability proven record (100% uptime and zero packet loss for the past 20+years).

- ❖ PRIVATE TURN-KEY DATA CENTER
- ❖ WORLD CLASS COLOCATION
- ❖ SSAE-18 SOC-2 AUDITED
- ❖ ISO 27001 CERTIFIED



## CORPORATE OFFICES

711 KAPIOLANI BLVD.  
HONOLULU, HI 96813

FOR MORE INFORMATION PLEASE CONTACT:

**Tim Sexton**

Colocation Sales Expert

+1 (571) 282-6321

[tsexton@cherryroad.com](mailto:tsexton@cherryroad.com)