

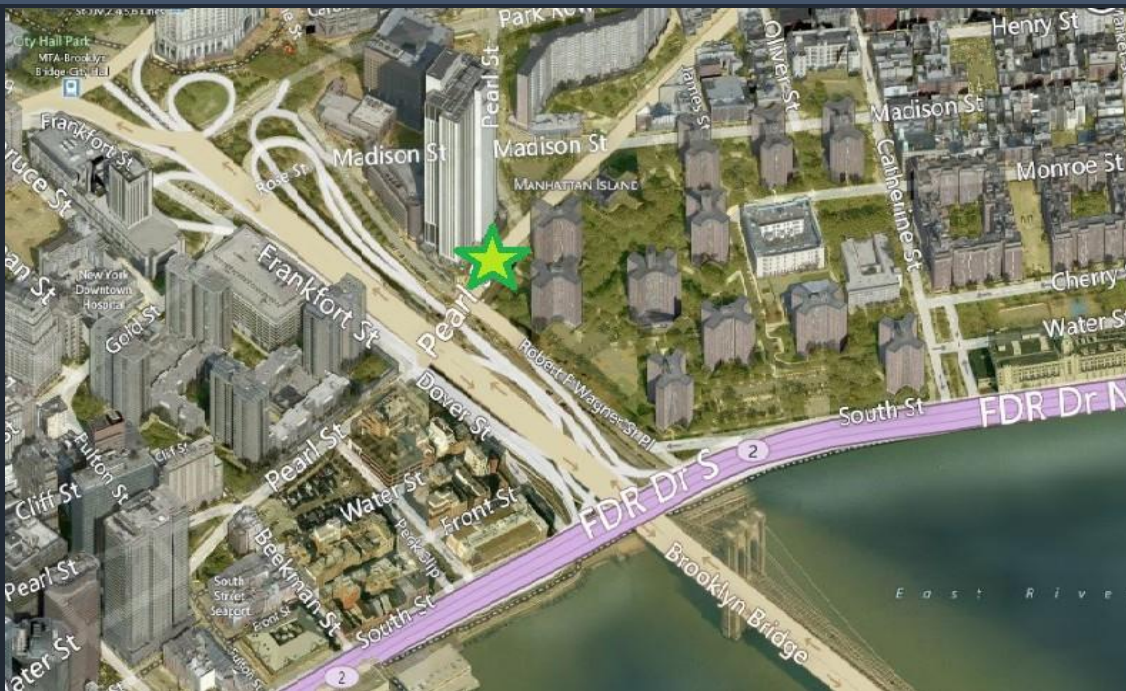


375 PEARL STREET @ MANHATTAN, NY

- ❖ PRIVATE TURN-KEY DATACENTER
- ❖ WORLD CLASS COLOCATION
- ❖ 100% UPTIME SLA
- ❖ CARRIER NEUTRAL
- ❖ AWS DIRECT CONNECT
- ❖ ENERGY EFFICIENT
- ❖ MISSION CRITICAL BANDWIDTH
- ❖ SSAE-18 SOC-2 AUDITED
- ❖ ISO 27001 CERTIFIED

FOR MORE INFORMATION PLEASE CONTACT:

Tim Sexton
Colocation Sales Expert
+1 (571) 282-6321
tsexton@cherryroad.com

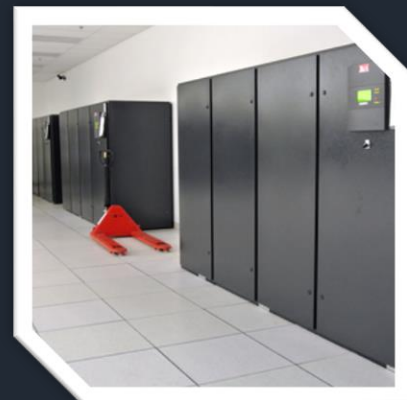


375 PEARL STREET @ MANHATTAN, NY

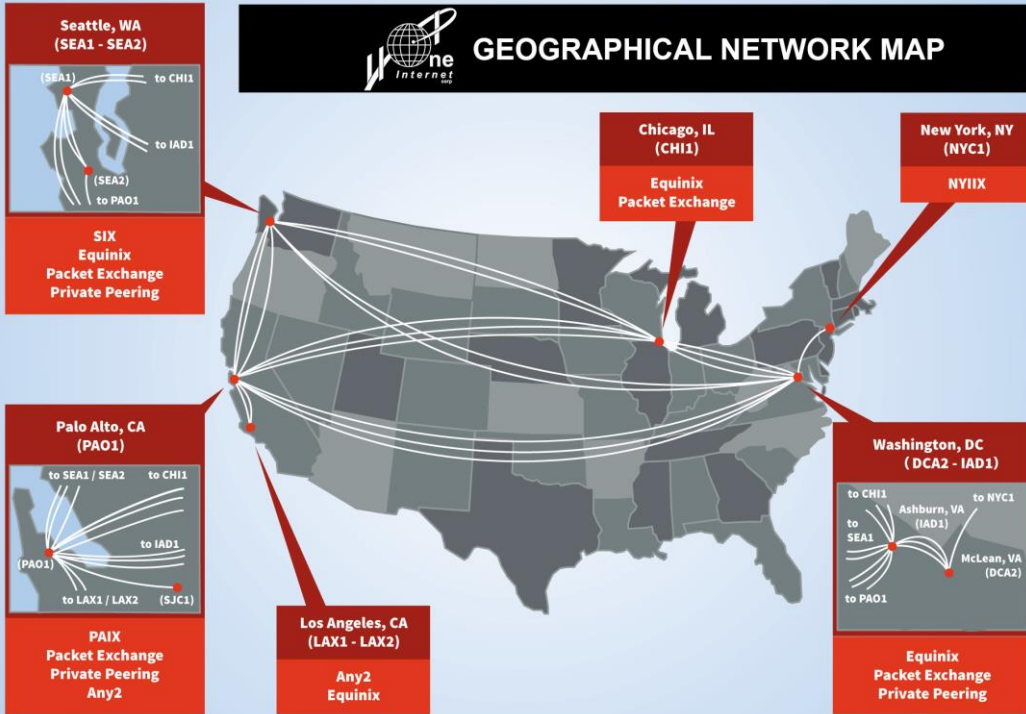
FEATURES & SPECIFICATIONS

- ∴ Power – 40 MWs of high tension service
- ∴ Inter-connectivity – 3 milliseconds to New York City's major exchanges
- Security – New York Police Department is immediately adjacent; secured vehicular access enforced by NYPD
- ∴ Redundancy and Topology
- ∴ Mechanical, water and electricity – All concurrently maintainable
- ∴ Telecommunications / Fiber – Four completely diverse paths into the building
- ∴ Utility Power – N+2
- ∴ UPS – N+1
- ∴ STS/PDU – 2N
- ∴ Generators – N+1
- ∴ Cooling – N+1
- ∴ Cross-braced perimeter wall construction for strength and stability
- ∴ Floor loading 150, 200 and 400 PSF
- ∴ Clear floor heights to 23'
- ∴ Wide column spacing for efficient layout on 35,000 sf floor plates
- ∴ Primary critical infrastructure is located at least 30' above street level
- ∴ Three 40' loading docks with vendor/support loading/unloading on site
- ∴ 72+ hours of generator back-up; 72 hours of water storage
- ∴ Back-up chiller water to cooling systems
- 100,000 gallons of fuel on site, at interior and exterior locations;
- 255,000 maximum capacity
- ∴ 24/7 on site security team, closed circuit television cameras, dual authentication
- Fire suppression via interlocked pre-action sprinkler system with incipient smoke detection VESDA

- ❖ PRIVATE TURN-KEY DATA CENTER
- ❖ WORLD CLASS COLOCATION
- ❖ SSAE-18 SOC-2 AUDITED
- ❖ ISO 27001 CERTIFIED



NATIONAL REACH COAST TO COAST IP BACKBONE



375
PEARL
STREET @
MANHATTAN,
NY

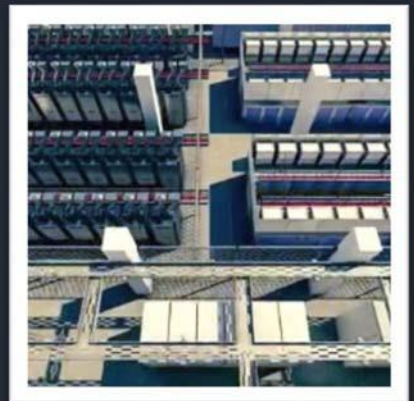
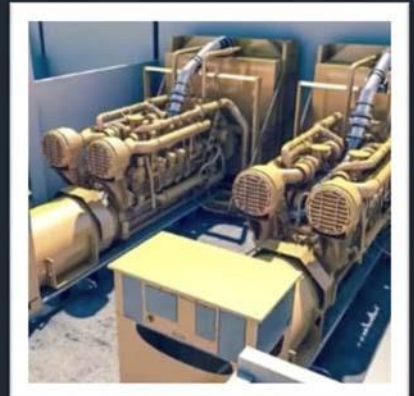
- ❖ PRIVATE TURN-KEY DATA CENTER
- ❖ WORLD CLASS COLOCATION
- ❖ SSAE-18 SOC-2 AUDITED
- ❖ ISO 27001 CERTIFIED

SEA2

3311 SOUTH 120TH PLACE, SEATTLE, WA

Features:

- :: SSAE-16 SOC-1 audited
- :: ISO 27001 & ISO 9001 certified
- :: Excellent connectivity & exceptional carrier redundancy – the highest concentration of major carrier PoPs in South Seattle, all right on site
- :: N+1 redundant UPS & AC systems
- :: 24x7x365 staffed & highly secure
- :: Full array of cloud hosting services provided on site



FOR MORE INFORMATION PLEASE CONTACT:

Tim Sexton
 Colocation Sales Expert
 +1 (571) 282-6321
tsexton@cherryroad.com

DCA2

8201 GREENSBORO DRIVE, TYSONS CORNER, VA

Features:

- :: SSAE-18 SOC-2 audited
- :: ISO 27001 certified
- :: Excellent connectivity and carrier redundancy
- :: Multiple redundant utility power feeds, generators and UPS systems
- :: 24x7x365 staffed & highly secure
- :: Fully autonomous private mini-datacenter and partly autonomous private suite available



375
PEARL
STREET @
MANHATTAN,
NY

ABOUT HOPONE INTERNET CORPORATION

:: HopOne Internet Corporation is a leading provider of full range Colocation services, in the US for more than 20 years. HopOne is a CherryRoad Technologies Inc. brand. CherryRoad, is a veteran in IT implementation and known for its reliability in cloud, hybrid, and customized IAAS solutions for more than 35 years. CherryRoad and HopOne are trusted by hundreds of clients who focus on their business goals, while we protect and care for their digital assets. [Learn more about CherryRoad](#)

:: HopOne is an enterprise-grade global cloud services company, operating a low-latency coast-to-coast IP backbone and multiple data centers across the US. As a cloud-based Infrastructure-as-a-Service (IaaS) provider, we provide a comprehensive range of services using our east and west coast data centers connected by our low latency coast-to-coast IP backbone. In addition to the traditional data center services such as colocation and IP transit, we offer a wide array of managed services, private, public and hybrid deployments on our advanced cloud platform and content delivery through our global content delivery network.

:: We provide services to businesses with mission-critical needs including government agencies, financial institutions, carriers and content providers. Our services use a highly customizable service array coupled with dedicated, 24x7x365 on-site and instantly reachable, highly skilled professional network and systems engineers.

:: All HopOne services are SSAE-18 SOC-2 audited and ISO 27001 certified and we have the impeccable performance and reliability proven record (100% uptime and zero packet loss for the past 20+years).

- ❖ PRIVATE TURN-KEY DATA CENTER
- ❖ WORLD CLASS COLOCATION
- ❖ SSAE-18 SOC-2 AUDITED
- ❖ ISO 27001 CERTIFIED



CORPORATE OFFICES

711 KAPIOLANI BLVD.
HONOLULU, HI 96813

FOR MORE INFORMATION PLEASE CONTACT:

Tim Sexton

Colocation Sales Expert

+1 (571) 282-6321

tsexton@cherryroad.com